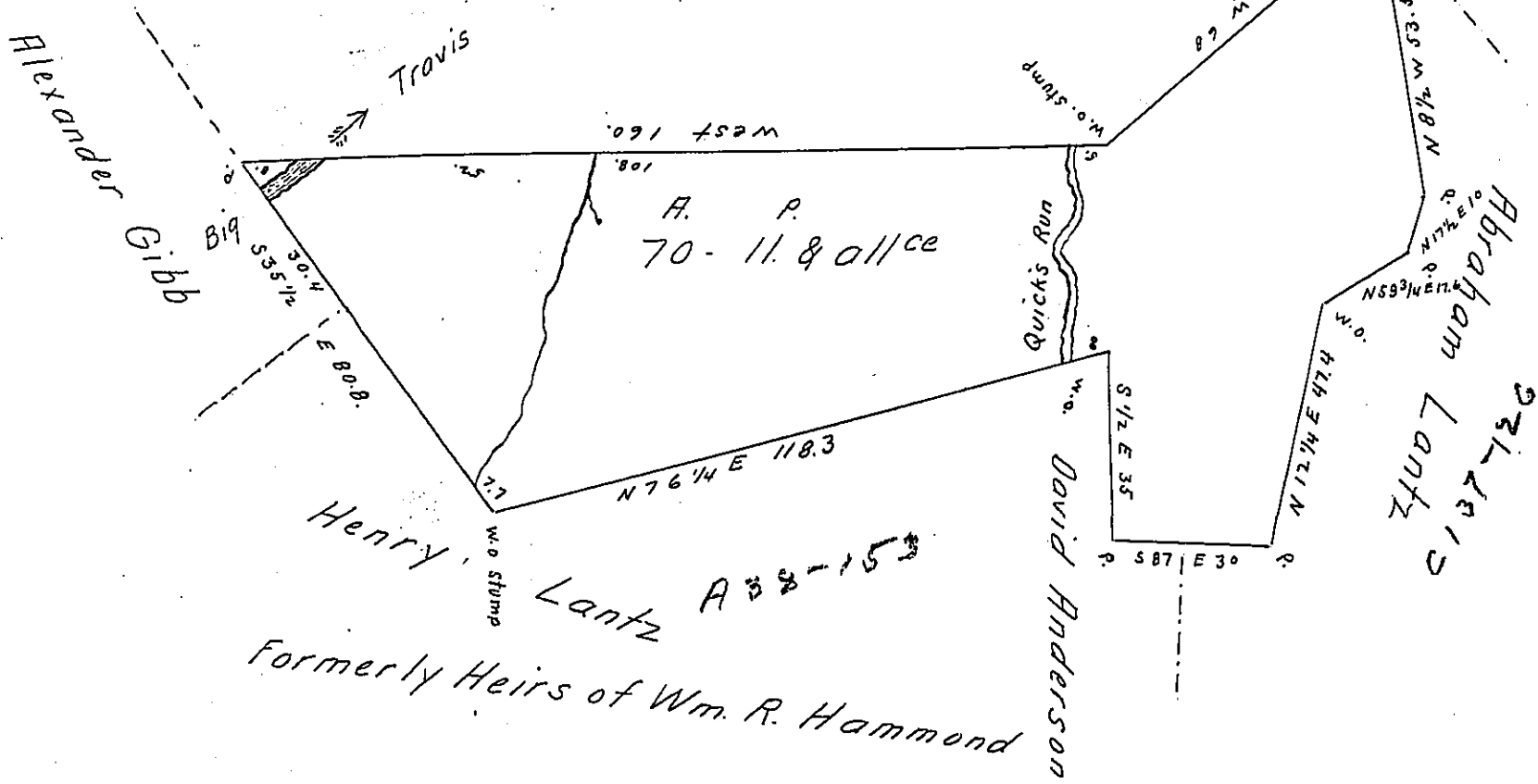


76 1/2
35 2/4
111 3/4

C 40-129

Whittam & Dugan



Formerly Heirs of Wm. R. Hammond

The above Draft represents a Survey Made. Sept. 1. 1859 in pursu-
ance of a Warrant granted to John A. Gibb in trust for the Heirs
of Peter Lance. deced. dated the 9th of Aug. A.D. 1859. of a piece of
land Situate in Hanover Township Beaver Co. Pa. Bounded as above.
containing 70 acres 11 perches & allowance of 6 per cent. (Improved)

To the Hon. John Rowe
Surveyer General
Harrisburgh Pa.

Azariah Wynn C.S.

IN TESTIMONY that the above is a copy of the original remaining on file in
the Department of Internal Affairs of Pennsylvania, made
conformably to an Act of Assembly approved the 16th day of
February, 1833, I have hereunto set my Hand and caused
the Seal of said Department to be affixed at Harrisburg,
this twenty seventh day of January 1905.

Loac D. Brown
Secretary of Internal Affairs.